

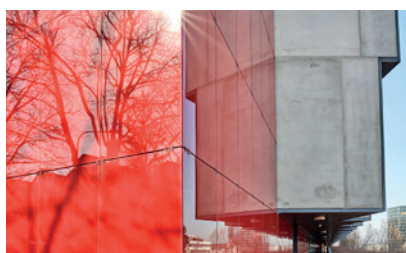
# Nussbaumstrasse 29 (Tower 3-5), 3006 Bern

New-  
Office

.ch/

Total 7'300 m<sup>2</sup>

These generous spaces with more than **7'300 m<sup>2</sup>** in a modern office building can be used in a variety of ways.



## FACTS

<b>Space</b>	total 7'300 m <sup>2</sup>
<b>Price</b>	on demand
<b>Move in</b>	on demand
<b>Fit out</b>	built raw
<b>Kind</b>	Office and storage space
<b>Location</b>	centrally located
<b>Parkingplace</b>	on demand
<b>Public Traffic</b>	near the building

## CONTACT

**wirz=tanner**  
IMMOBILIEN

**Wirz Tanner Immobilien AG**

Reto Gehri

Europaplatz 1a, Postfach

3001 Bern

**Phone** +41 31 385 19 32

**Mail** reto.gehri@wirztanner.ch

**INFO** basement – 4<sup>th</sup> floor | built raw | centrally located

## Bright and flexible surface design with perfect connection

The four towers on Nussbaumstrasse form a modern building complex situated above the motorway. The contemporary, bright rooms feature large windows with exterior blinds that offer optimal lighting conditions in any weather.

### Further information:

- Basement to fourth floor: office space totalling 8,700 m<sup>2</sup>; partial areas of 300 m<sup>2</sup> or more can be rented.
- Generous storage spaces available
- Covered parking spaces available

The building is in a prime location in the Baumgarten area of Bern and is optimally connected to the A6 motorway. You can conveniently reach Bern's main railway station in 15 minutes by public transport. The Wankdorf railway station and BERNEXPO grounds are also close by. The neighbourhood is home to countless restaurants and shops.

Have we sparked your interest? Please get in touch with us; we will be happy to provide you with more information.

Changes and deviations from the published information and the building specifications are expressly reserved. We assume no liability.