

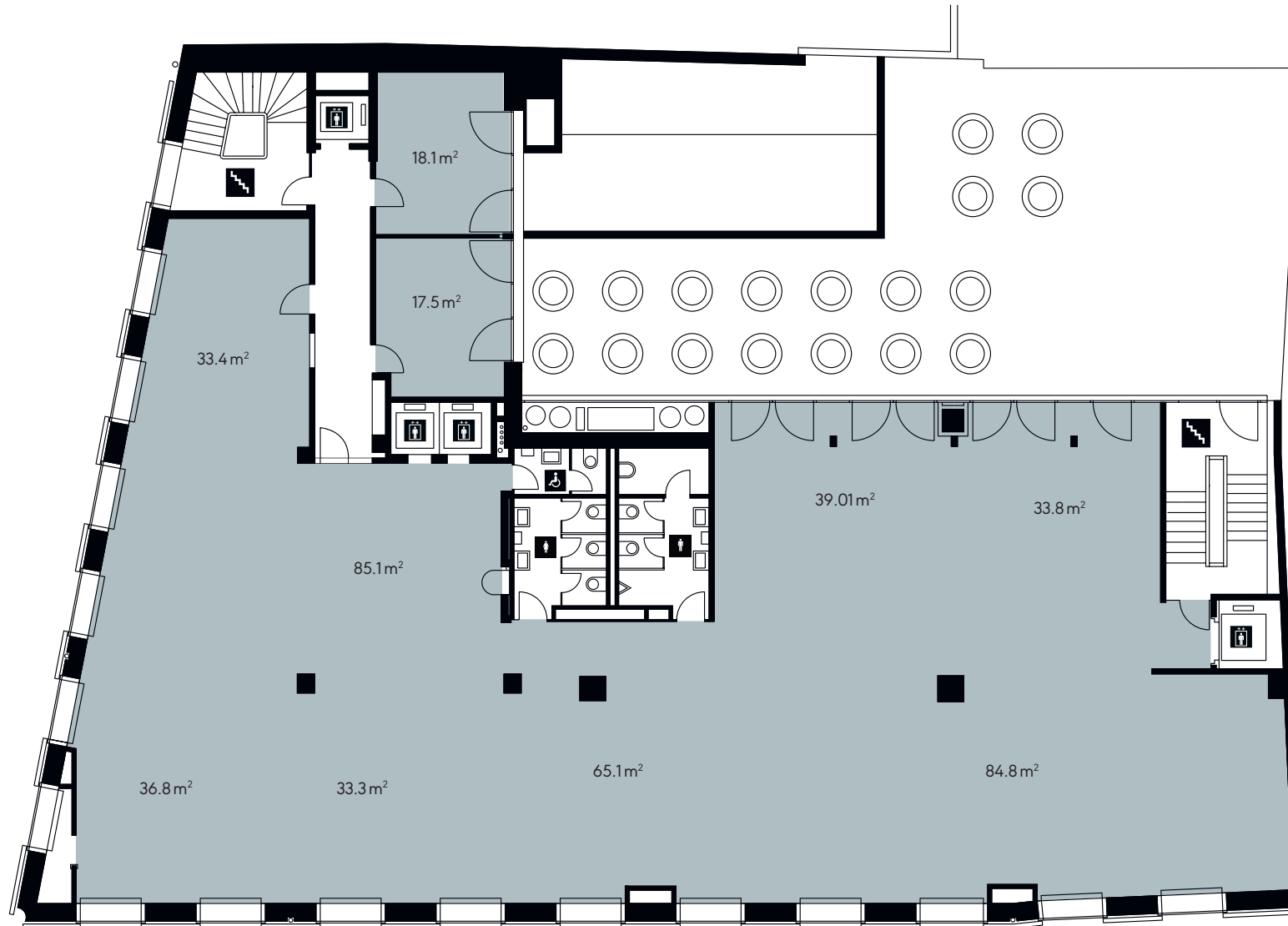
Nidaugasse 15, 2502 Biel

Floor plan - 1st floor

New-Office

.ch

509 m² - 1st floor



CONTACT

wirz+tanner
IMMOBILIEN

Wirz Tanner Immobilien AG

Reto Gehri

Europaplatz 1a

3001 Bern

Phone +41 31 385 19 32

Mail reto.gehri@wirztanner.ch

Changes and deviations from the published information and the building specifications are expressly reserved. We assume no liability.

Nidaugasse 15, 2502 Biel

Floor plan - 2nd floor

New-Office

.ch

548 m² - 2nd floor



CONTACT

wirz+tanner
IMMOBILIEN

Wirz Tanner Immobilien AG

Reto Gehri

Europaplatz 1a

3001 Bern

Phone +41 31 385 19 32

Mail reto.gehri@wirztanner.ch

Changes and deviations from the published information and the building specifications are expressly reserved. We assume no liability.

Nidaugasse 15, 2502 Biel

Floor plan - 3rd floor

New-Office

.ch

310 m² - 3rd floor



CONTACT

wirz+tanner
IMMOBILIEN

Wirz Tanner Immobilien AG

Reto Gehri

Europaplatz 1a

3001 Bern

Phone +41 31 385 19 32

Mail reto.gehri@wirztanner.ch

Changes and deviations from the published information and the building specifications are expressly reserved. We assume no liability.