

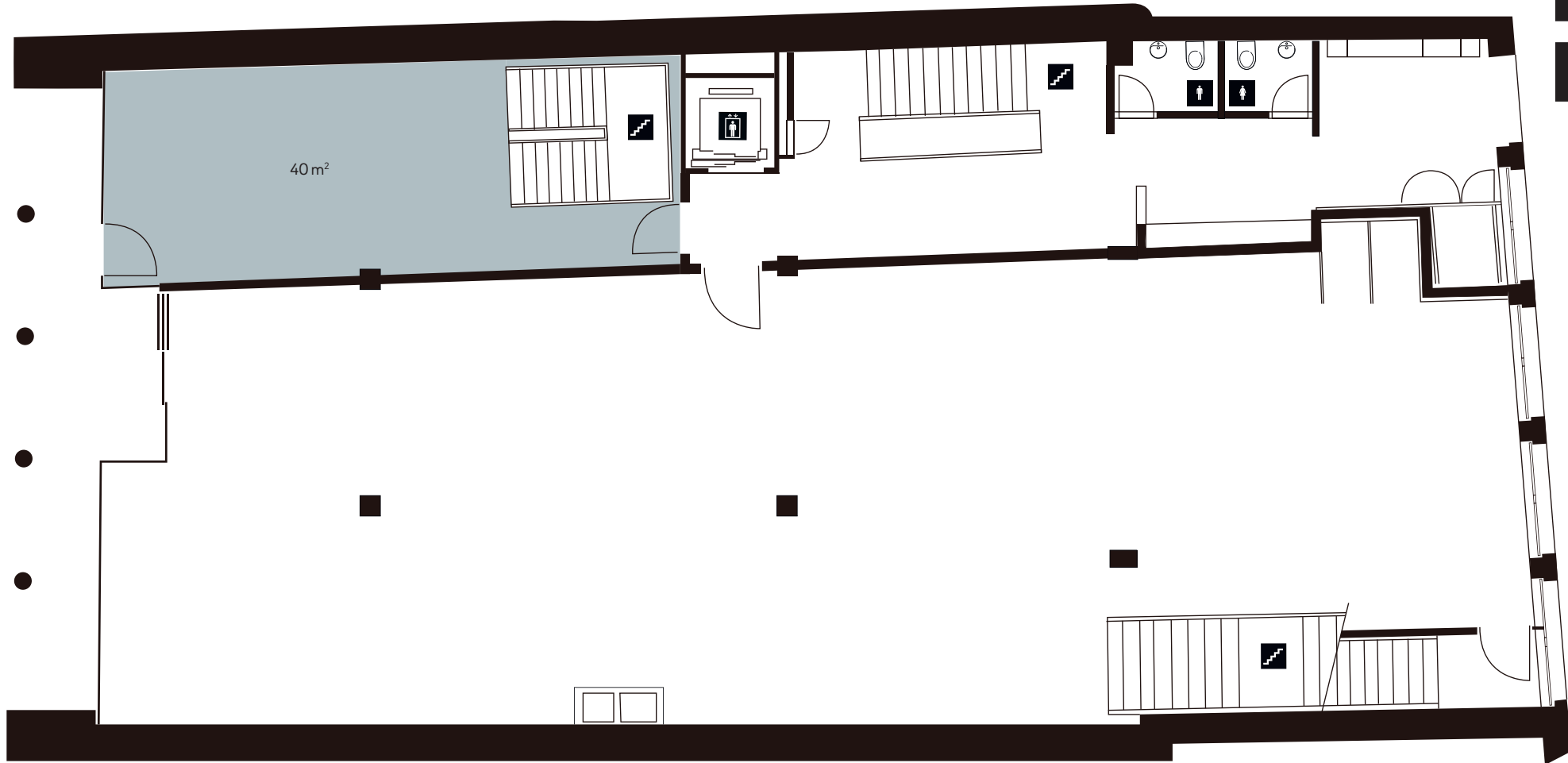
Nidaugasse 42, 2502 Biel

Floor plan - ground floor

New-Office

.ch

40 m² - gr. fl.



CONTACT

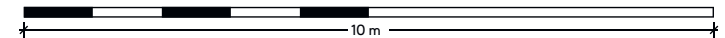


Wincasa AG

Dominik Feller
Laupenstrasse 19
3008 Berne

Phone +41 31 389 21 04

Mail dominik.feller@wincasa.ch



Changes and deviations from the published information and the building specifications are expressly reserved. We assume no liability.

Nidaugasse 42, 2502 Biel

Floor plan - 1st floor

New-
Office

.ch

150 m² - 1st floor



CONTACT



Wincasa AG

Dominik Feller
Laupenstrasse 19
3008 Berne

Phone +41 31 389 21 04

Mail dominik.feller@wincasa.ch

Changes and deviations from the published information and the building specifications are expressly reserved. We assume no liability.