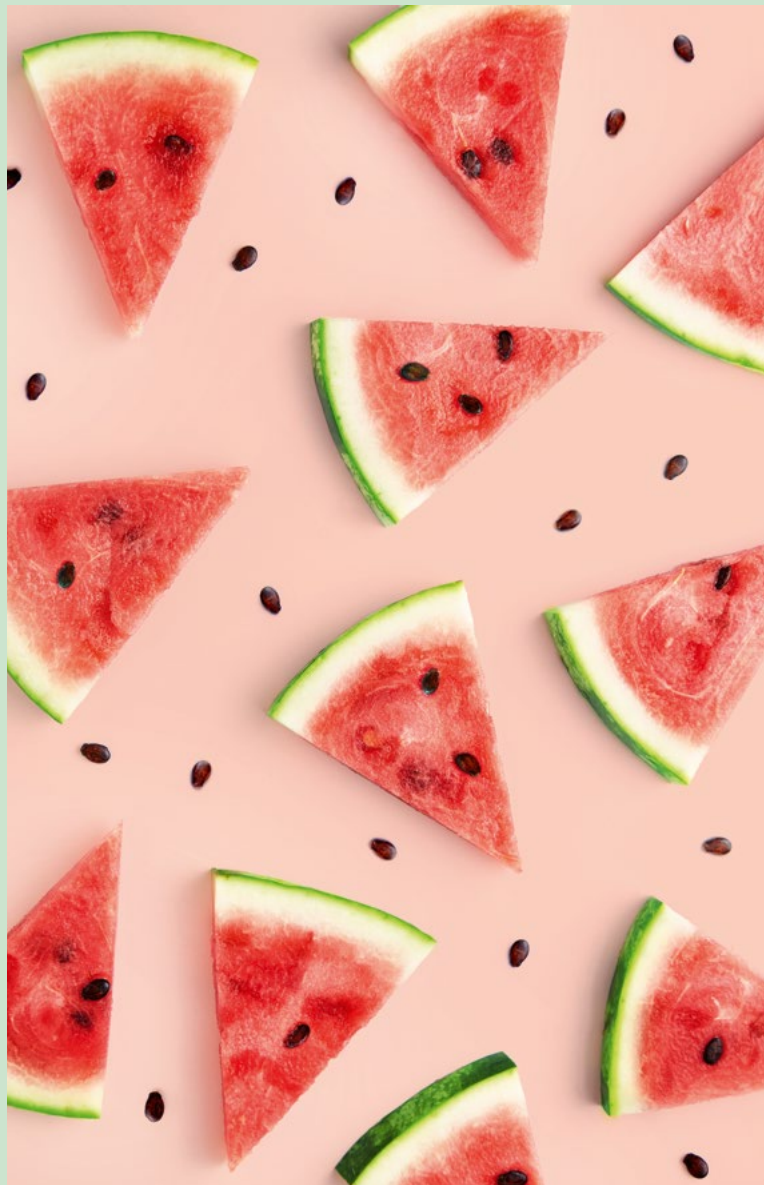


mint

GENEVA



A fresh take on office space

mint

flex

smart

serviced

connected

STREET FOOD





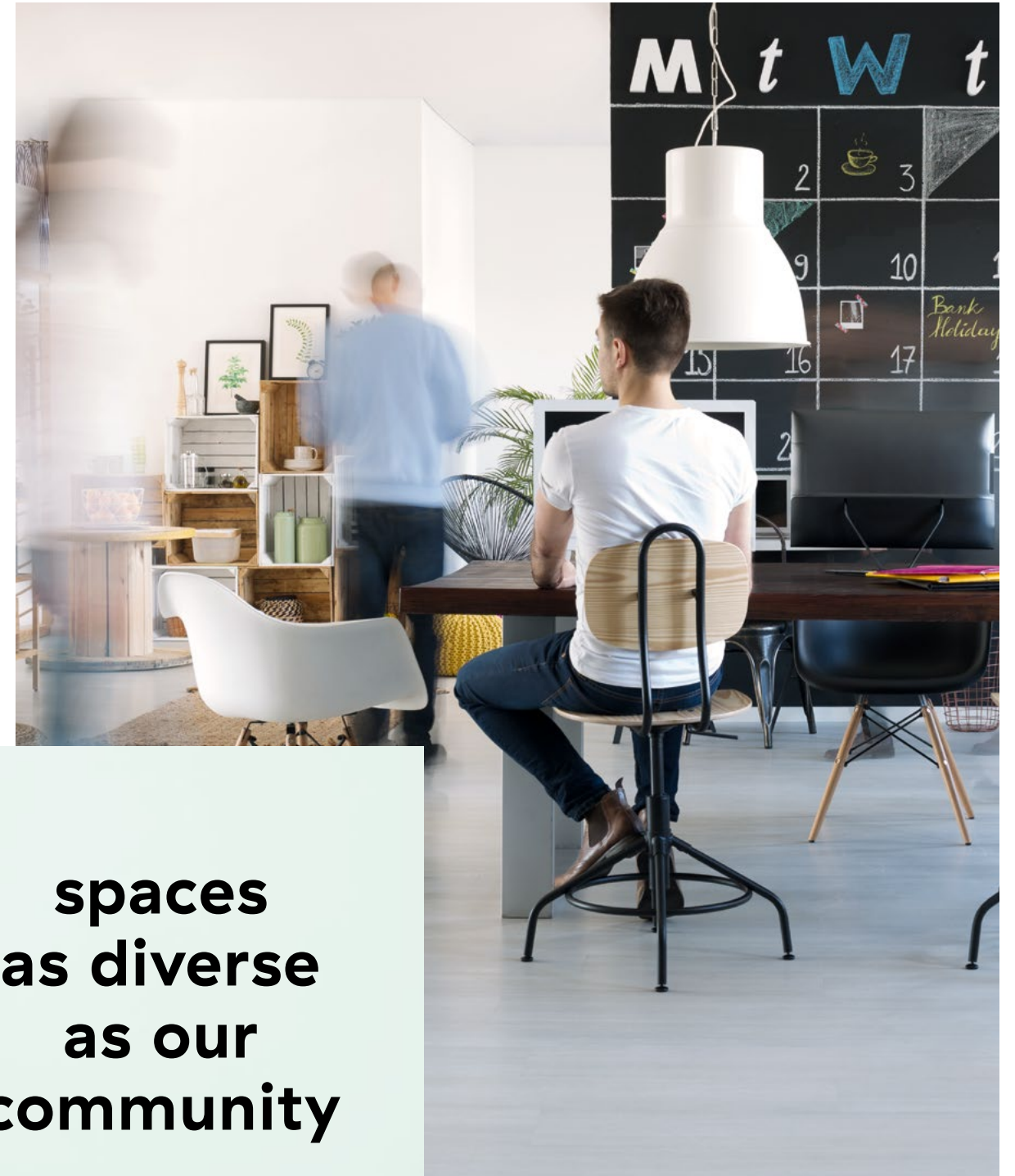
fancy a *mint*?

Modern and inspiring, **mint** is a new kind of workplace that lets ideas grow and flourish.

With flexible spaces playing host to a buzzing community of forward-thinking entrepreneurs, **mint** delivers a fresh take on office space.



spaces
as diverse
as our
community



the workplace to be

Well-connected, cutting-edge and designed for collaboration and wellbeing, **mint** offers space to businesses who live in the present and look to the future.

Give your team a stimulating work environment to keep things fresh through the work day.

From the garden to the courtyard, they'll never be far from a green space where they can nurture projects and look after themselves.



perfect for small
to medium-sized
businesses





the highlights



a **hothouse** for innovative businesses

a **modular** workspace that can be shaped around you

light and bright spaces to let company culture shine

abundant **communal spaces**
and a spacious inner courtyard

conveniently located and **well-connected**

attractive rents (starting at 330 CHF/m²/p.a.)



in your **elemint**

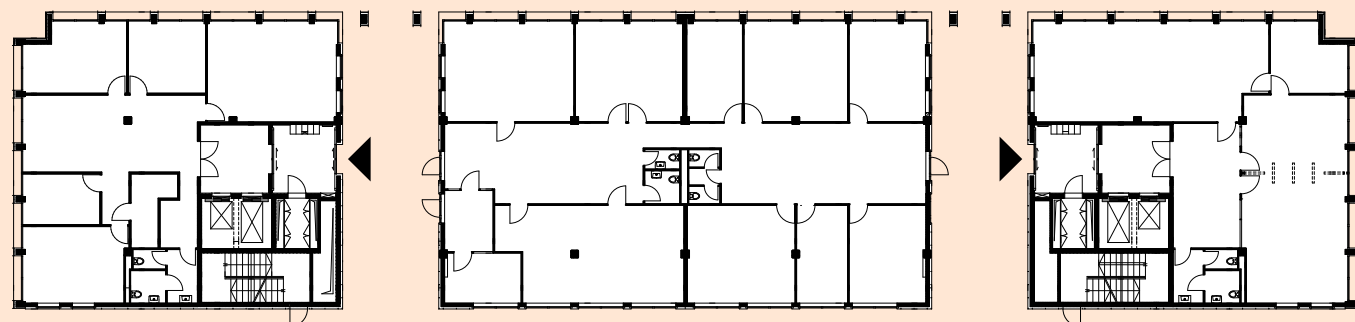
With bespoke fit out available throughout, the space can be divided into sub-spaces as small as 500 m². Whether you're after an open plan arrangement, co-working facilities, partitioned workspace or a tailored mix of all three, **mint** can melt seamlessly into a configuration that suits you and your team.





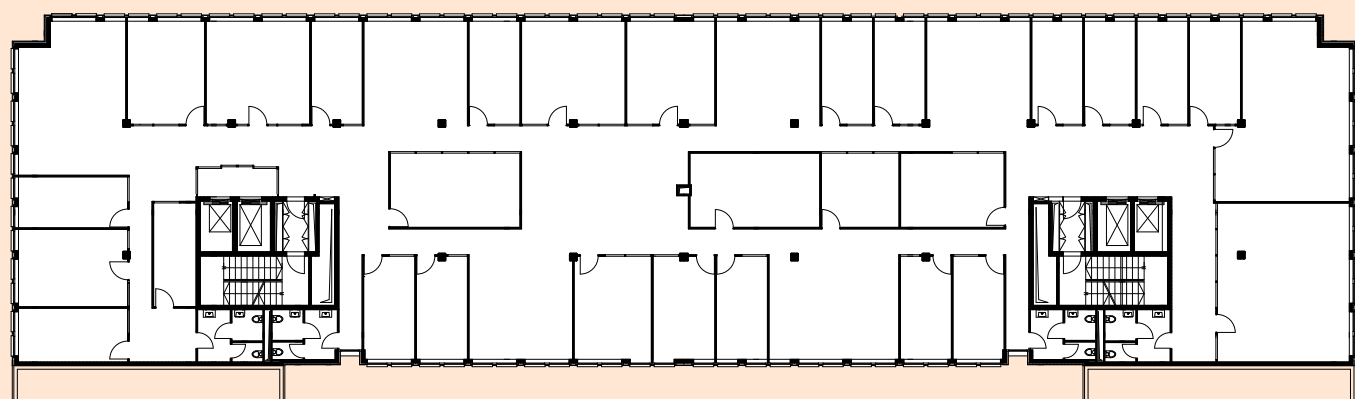
ground floor

2 entrances



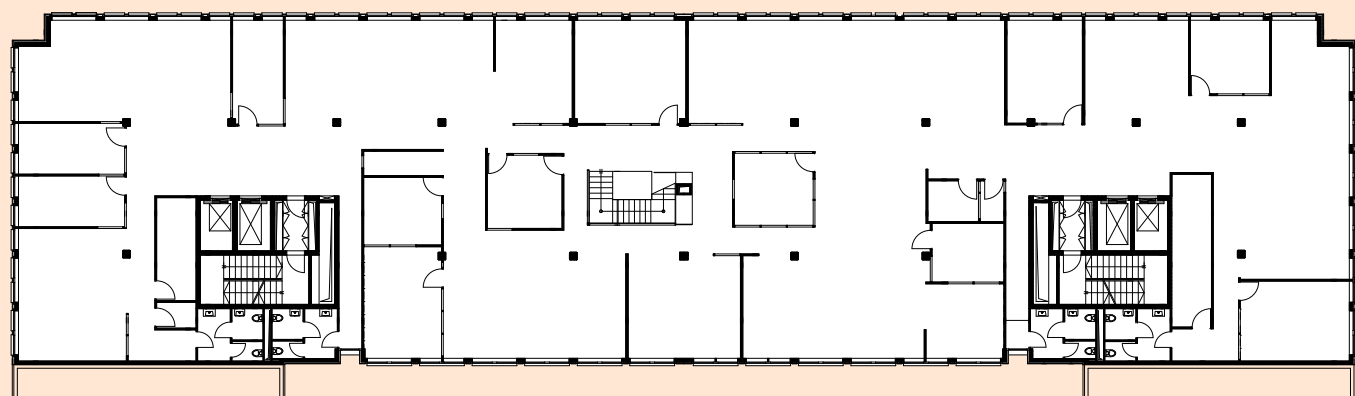
1st floor

1–2 tenants | starting at 500 m²



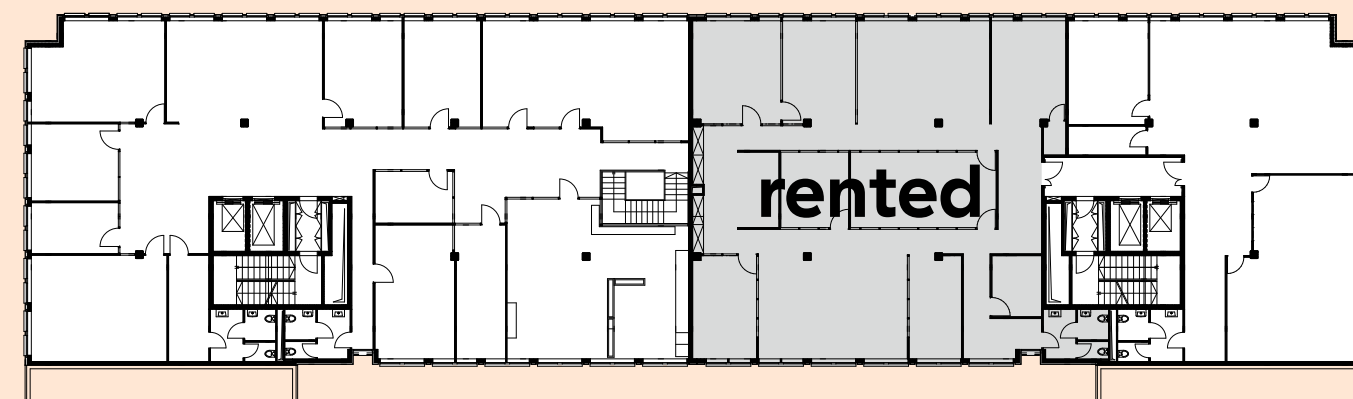
2nd floor

1–2 tenants | starting at 500 m²



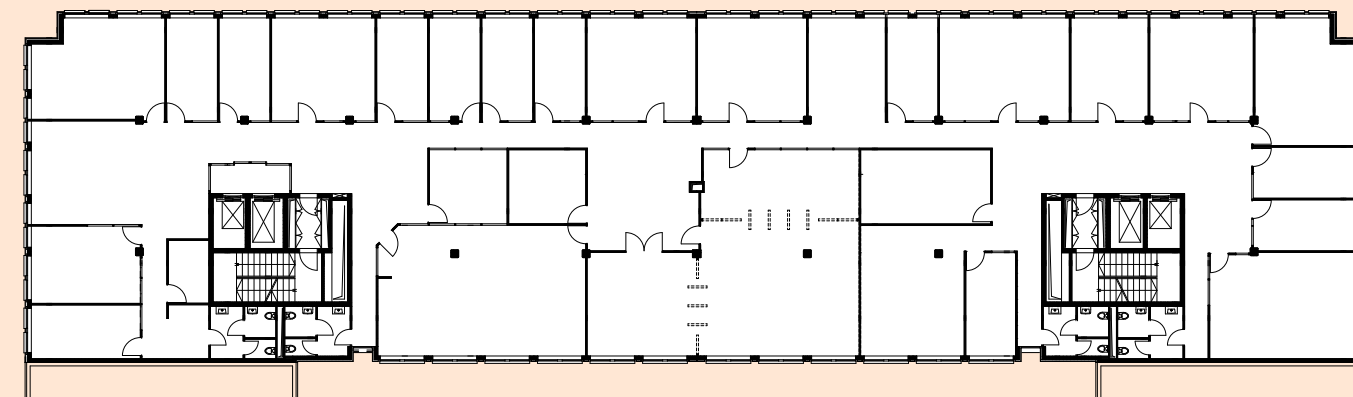
3rd floor

1–3 tenants | starting at 170 m²



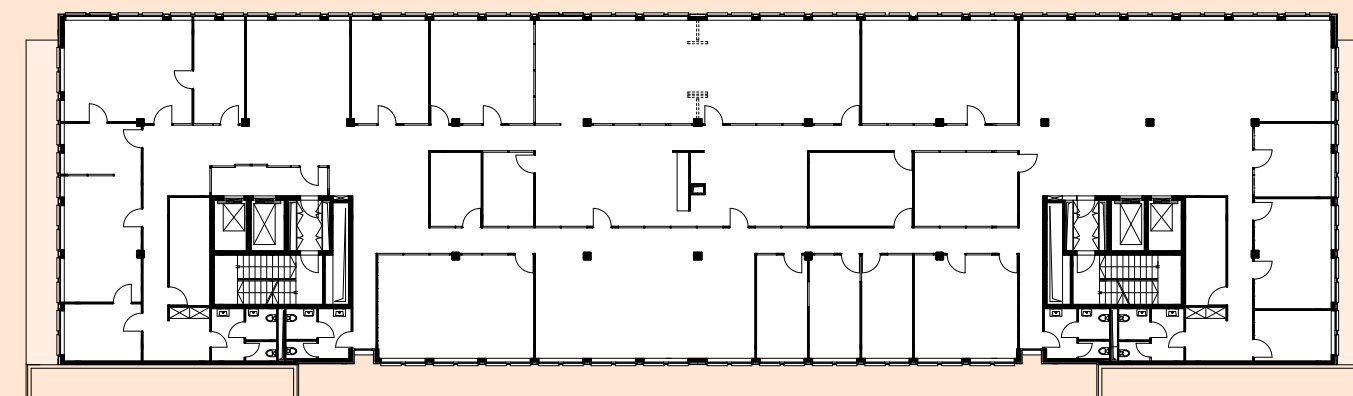
4th floor

1–2 tenants | starting at 500 m²



5th floor

1–2 tenants | starting at 500 m²



in *mint* condition

suspended ceiling
with fresh air ventilation system



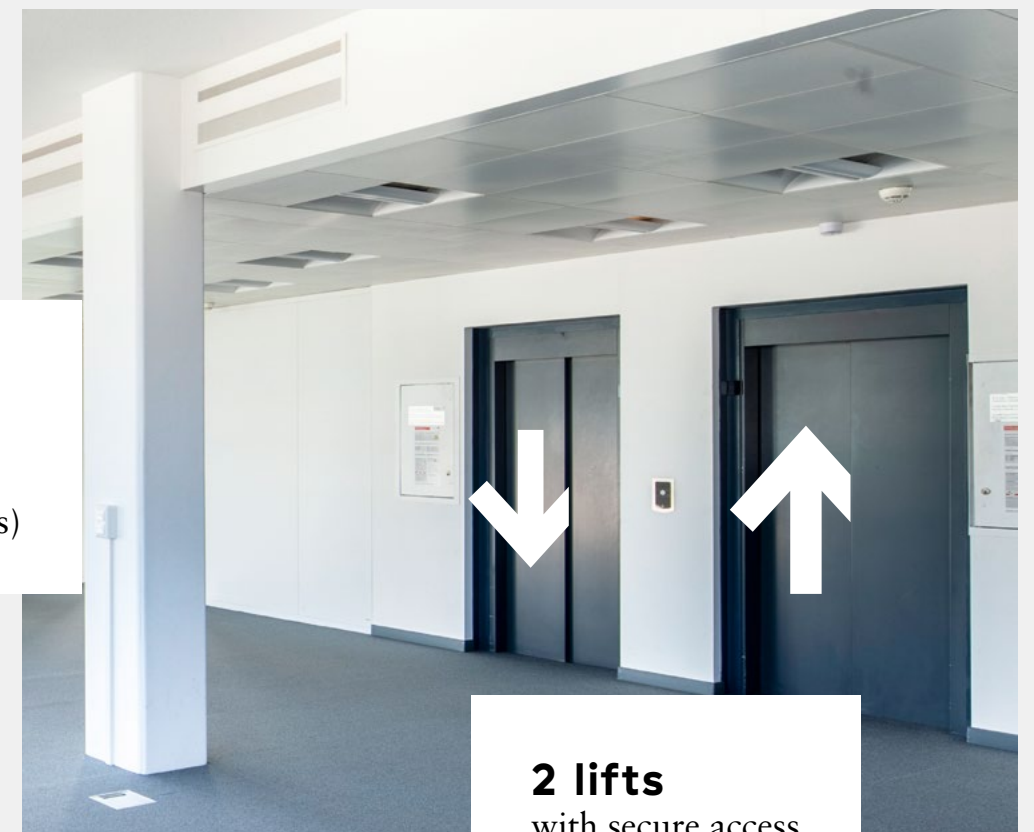
ceiling heights
as high as
2.60 m in
communal areas
and 3.10 m in
working areas

raised flooring
with built-in plug ports



office fit outs
with option to retain
previous tenants'
layout

2 separate entrances
(one for staff
and one for clients)




2 lifts
with secure access

an enviable location


A haven in the heart of bustling Geneva, **mint** boasts an ultra-well-connected location, so your ideas can spread far and fast.

Whether by car, bike or on foot, getting to **mint** is always a breeze.




A1 motorway
by car

1 min




airport
by car
by bike

5 min
6 min




Cornavin train station
by public transport
by bike

20 min
15 min



tram stop (on foot)

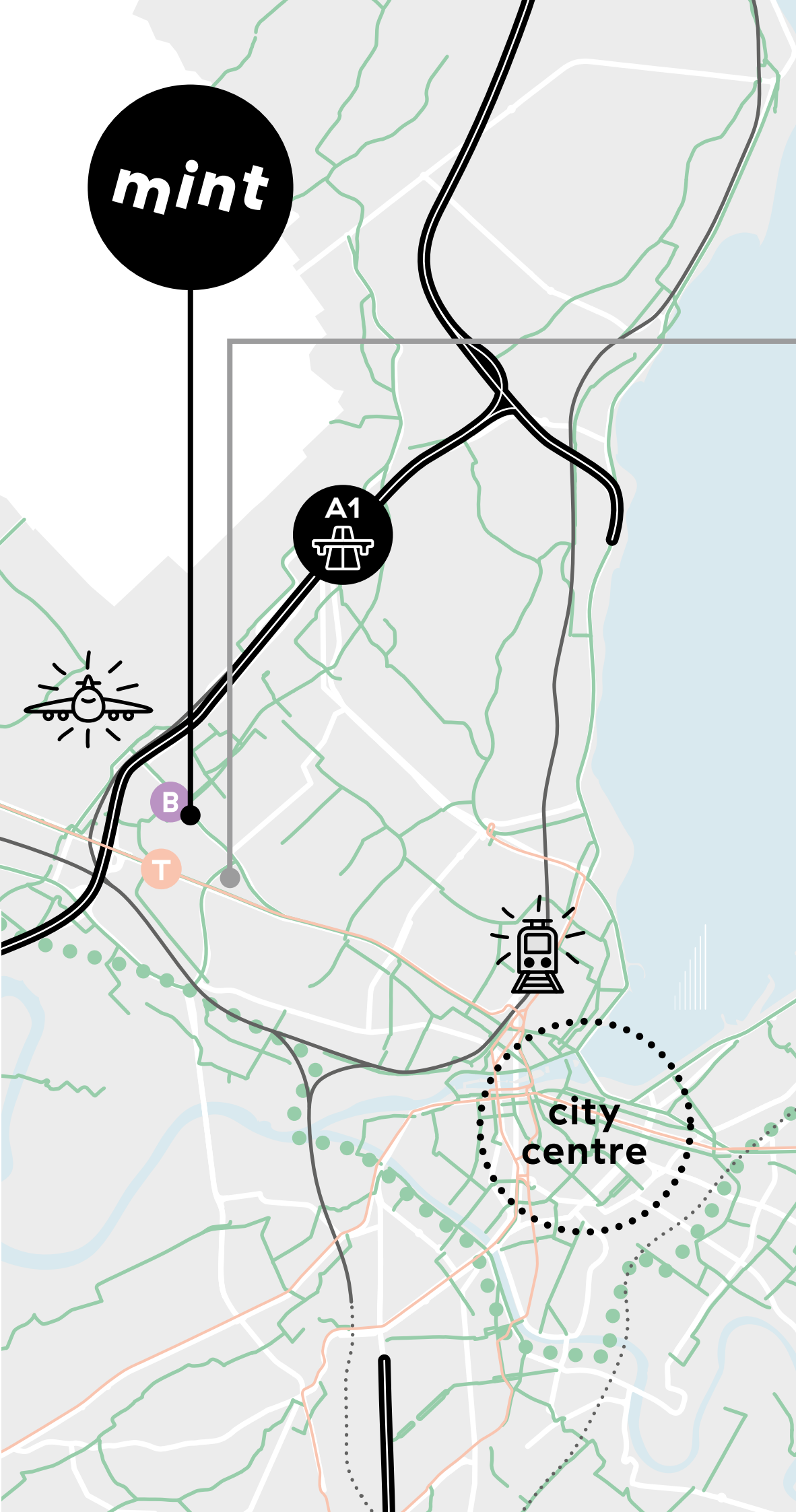
10 min



bus stop (on foot)

1 min

133 indoor parking spaces



nearby amenities



Balexert shopping centre is just a ten-minute walk away and offers a suite of amenities: supermarket, gym, restaurants and takeaways, cinema, healthcare facilities and more.



balexert

sweet ride

Not forgetting eco-friendly transport, **mint** is perfect for people zipping around town on two wheels.

-  **bike trails**
-  **main cycle routes**



at your
service

fresh



paint!

brand new
reception area



inner courtyard
& green spaces

outdoor furniture
for meals and picnics

clear signage
in your own
branding

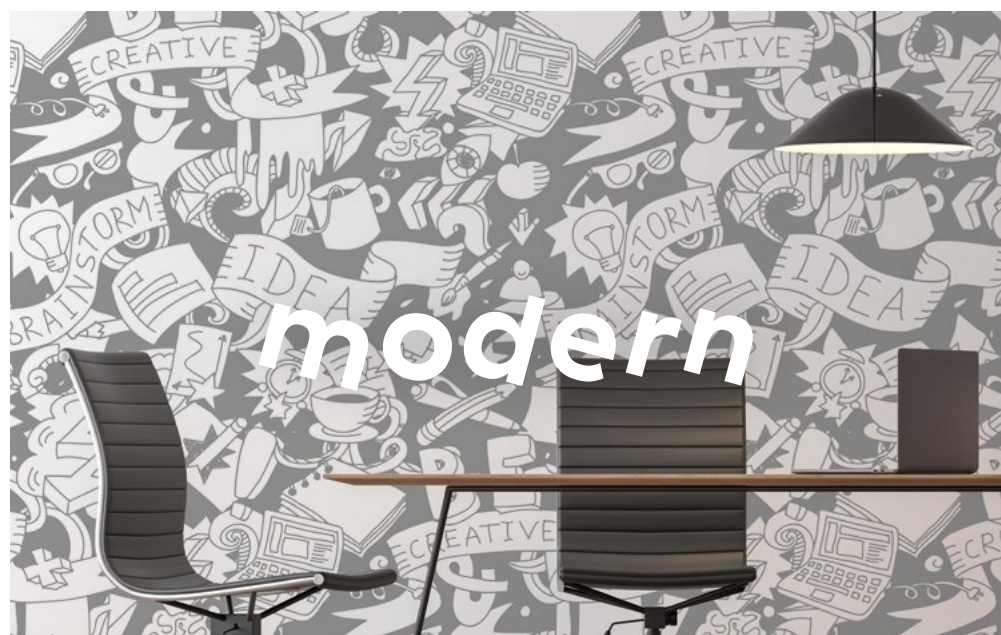


Storage space
available
(CHF 120.- / m² / p.a.)



133 indoor parking
spaces allocated according
to rented floorspace

(1 space / 45 m²,
CHF 300 / month)



comint soon....

The wellbeing of tenants is what makes **mint** tick. That’s why right now we’re exploring what other services we could provide to suit their needs, including:



food trucks



café/restaurant



meeting rooms, little & large



gym



This brochure in no way constitutes a contractual document. Descriptions and floorplans are provided on an indicative basis only and may be amended at any time without notice.

mint

contact



Grégoire Marra

Analyst

+41 (0)22 839 73 78

letting-geneva@eu.jll.com

www.mint-office.ch

mint